

PRODUCT INFORMATION PACKET



Model No: 284TTTNA14536AA

Catalog No: 824534.00

..25HP..1800RPM.284T.TEAO.230/460V.3PH.60HZ.AIR OVER.40C.1.15SF.RIGID BASE.....COOLING
TOWER

Cooling Tower



Regal and Leeson are trademarks of Regal Beloit Corporation or one of its affiliated companies.

©2018 Regal Beloit Corporation, All Rights Reserved. MC017097E



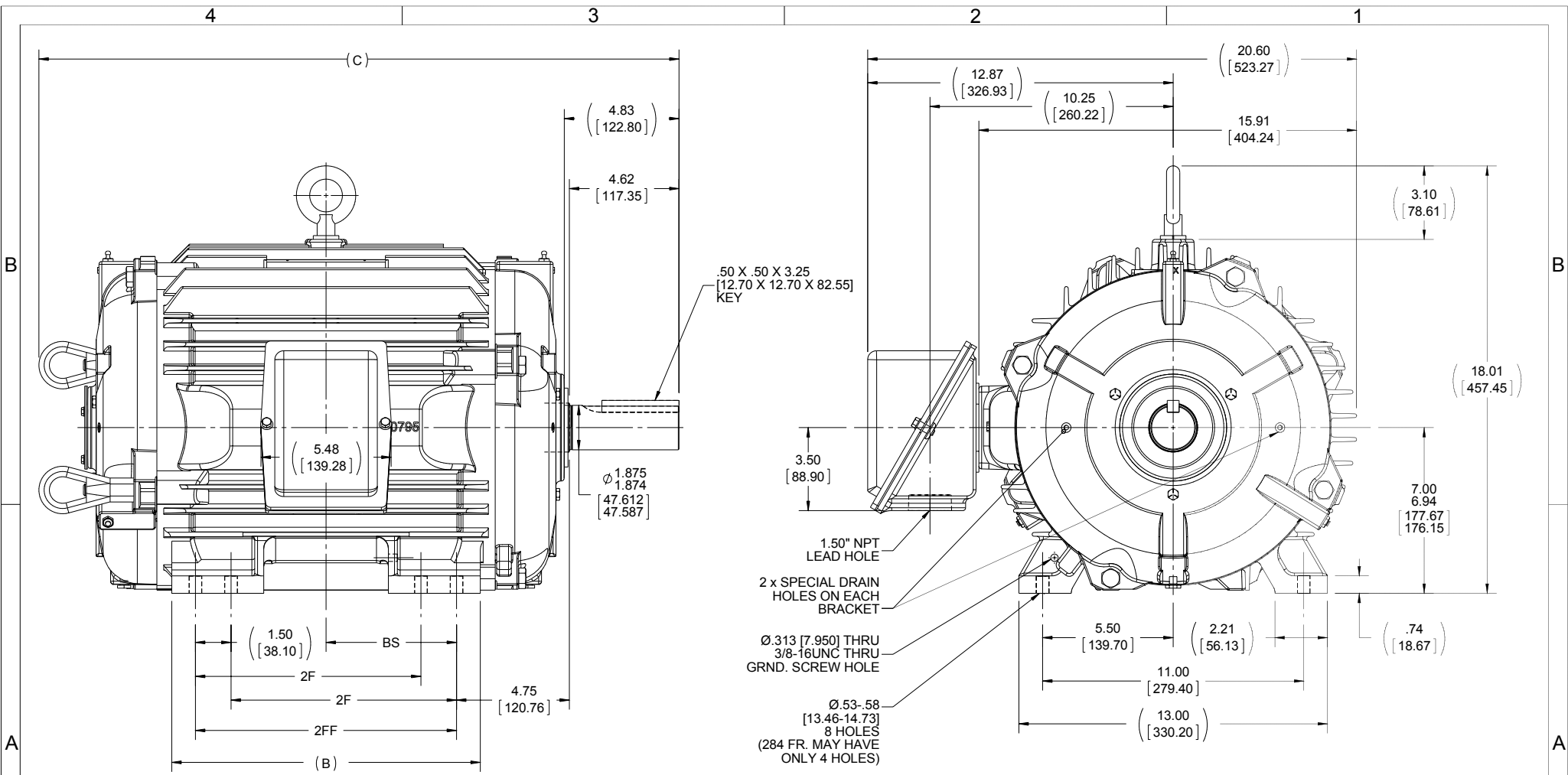


Nameplate Specifications

Output HP	25 Hp	Output KW	18.7 kW
Frequency	60 Hz	Voltage	230/460 V
Current	63.0/31.5 A	Speed	1772 rpm
Service Factor	1.15	Phase	3
Efficiency	92.4 %	Duty	Continuous
Insulation Class	F	Design Code	B
KVA Code	G	Frame	284TV
Enclosure	Totally Enclosed Air Over	Overload Protector	No
Ambient Temperature	40 °C	Drive End Bearing Size	6311
Opp Drive End Bearing Size	6210	UL	Recognized
CSA	Y	CE	Y
IP Code	56		

Technical Specifications

Electrical Type	Squirrel Cage Inverter Rated	Starting Method	Line Or Inverter
Poles	4	Rotation	Reversible
Mounting	Rigid base	Motor Orientation	HORIZONTAL OR UP OR DOWN
Drive End Bearing	BALL	Opp Drive End Bearing	BALL
Frame Material	Cast Iron	Shaft Type	T
Overall Length	26.97 in	Frame Length	14.25 in
Shaft Diameter	1.875 in	Shaft Extension	4.62 in
Assembly/Box Mounting	F1/F2 CAPABLE		
Outline Drawing	B-SS312689-1425	Connection Diagram	A-EE7308-LE

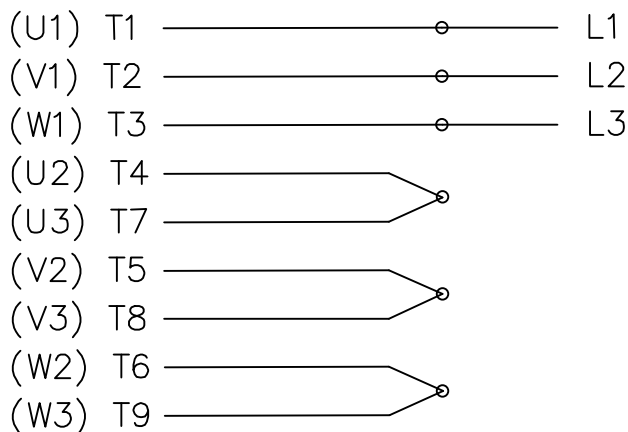


- NOTES:
 1. CONDUIT BOX CAN BE ROTATED IN 90° STEPS.
 2. CONDUIT BOX CAN BE MOUNTED ON OPPOSITE SIDE BY REMOVING BRACKETS AND TURNING FRAME 180°.
 3. NAMEPLATE TO BE READ FROM CONDUIT BOX SIDE OF MOTOR.

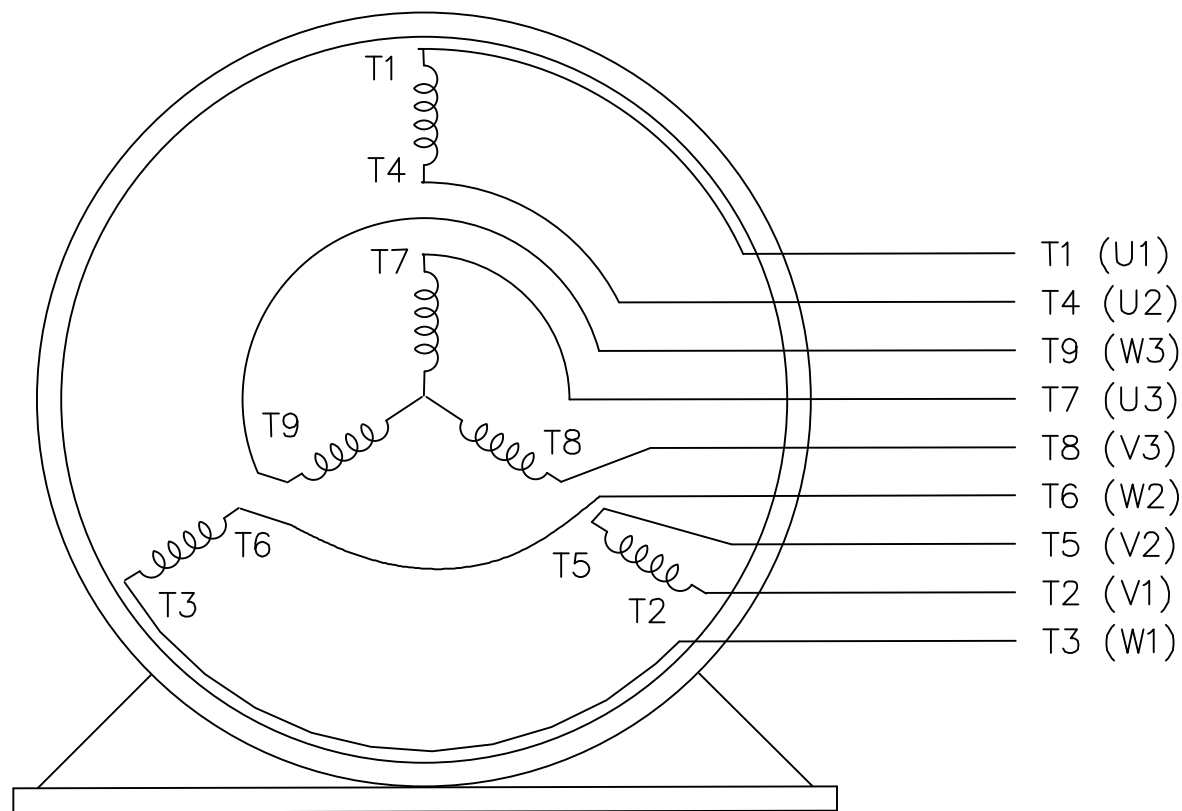
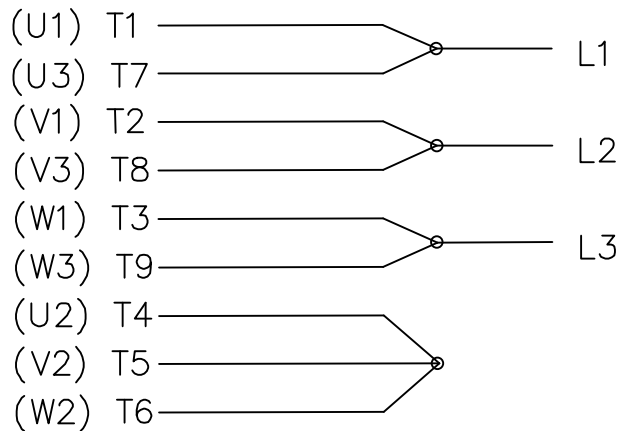
DRAWING REVISION B		REVISION BY JWO		DATE 07-27-2015		TOLERANCES UNLESS OTHERWISE SPECIFIED:		DRAWN BY W. JOERGER		REGAL™ Regal Beloit America, Inc.	
ECO ECO-0081645		APPROVED BY TB		DATE 07-27-2015		DEC. INCH mm ANGLE X ±0.1 [+2.5] ±7°-30° XX ±0.03 [+0.76] XXX ±0.005 [+0.127] XXXX ±0.0005 [+0.0127]		DATE 03-27-2015		DESCRIPTION	
ECO DESCRIPTION		NMR-0084175, MU120012		COPYRIGHT REGAL BELOIT AMERICA, INC. ALL RIGHTS RESERVED. PROPRIETARY AND CONFIDENTIAL INFORMATION - THIS DOCUMENT IS THE PROPERTY OF REGAL BELOIT AMERICA, INC. (OWNER) AND CONTAINS OWNER'S PROPRIETARY INFORMATION. ANY PERSON, CORPORATION OR OTHER FIRM RECEIVING IT IS DEEMED, BY RECEIVING IT, TO AGREE THAT IT, AND/OR ANY PART OF IT, SHALL NOT BE DISCLOSED TO ANY PERSON, CORPORATION OR OTHER ENTITY, DUPLICATED, AND/OR USED, EXCEPT AS EXPRESSLY APPROVED IN WRITING IN ADVANCE BY OWNER. THIS DOCUMENT SHALL BE RETURNED TO OWNER UPON REQUEST. IT MAY BE SUBJECT TO CERTAIN RESTRICTIONS UNDER APPLICABLE EXPORT CONTROL LAWS AND REGULATIONS.		REMOVE BURRS & BREAK SHARP EDGES: .003/.015 [0.076/.381] CORNER FILLETS: .02 [0.51] MACHINED SURFACES: 200 INCH 5.1 mm SHOWN IN [BRACKETS]		DATE 03-27-2015		280T FR - TEAO / TENV - BB - STD - 12.50" LAM	
DASH	FRAME	B	C	BS	2F	2FF	MATERIAL		PROCESS/FINISH		SHEET
1275	284T	12.50 [317.50]	25.47 [646.94]	4.75 [120.65]	---	9.50 [241.30]	B		DRAWING NUMBER		1 OF 1
1425	284/286T	13.00 [330.20]	26.97 [685.04]	5.50 [139.70]	9.50 [241.30]	11.00 [279.40]	SS312689				

THREE PHASE DUAL VOLTAGE MOTOR

HIGH VOLTAGE




LOW VOLTAGE



VIEW OF TERMINAL END

REF.
WINDING DIAGRAM

T8Y, T2Y, T2BL, T4BX, T2EC, T2G
T6BZ, T2B, T6BL, T4AV, T6B, T4B

				TOLERANCES UNLESS SPECIFIED		 ELECTRIC MOTORS GEARMOTORS AND DRIVES	DRAWN HLB 04-29-2002		
				DEC.	INCHES		CHK	ML 05-03-2002	
				.X	±.1		APPD	GK 05-03-2002	
				.XX	±.01	TITLE CONNECTION DIAGRAM 3Ø - DUAL VOLTAGE MOTOR	SCALE	1=1	
2	ADDED IEC NOTATIONS... (U1), (V1) ETC. (MU105786)	REP 01-11-2012	DR	.XXX	±.005		REF		
1	NEW DRAWING	HLB 05-03-2002	ML	.XXXX	±.0005	MAT'L.	FMF		
NO.	REVISION	BY & DATE	CHK	ANG	±1/2'	FINISH	PREV		
THIS DRAWING IN DESIGN AND DETAIL IS OUR PROPERTY AND MUST NOT BE USED EXCEPT IN CONNECTION WITH OUR WORK ALL RIGHTS OF DESIGN AND INVENTION ARE RESERVED THIS IS AN ELECTRONICALLY GENERATED DOCUMENT - DO NOT SCALE THIS PRINT				RFP		CAD FILE EE7308-LE	SIZE	DRAWING NO. PAGE OF	REV.
				DIST	LB-WP		A	EE7308-LE	2



Motor Load Data

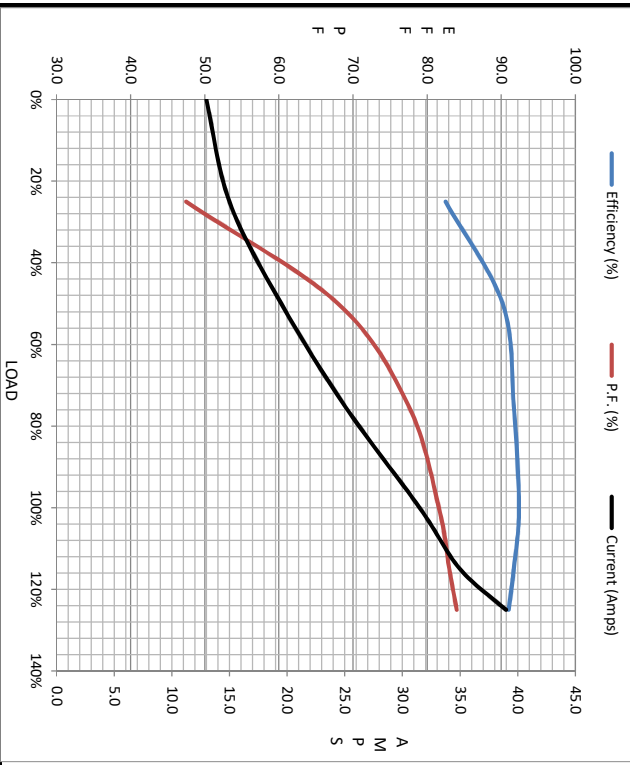
Load	0%	25%	50%	75%	100%	115%	125%	LR
Current (Amps)	13.0	15.0	19.5	25.0	31.5	35.0	39.0	182
Torque (ft-lb)	0.00	18.5	38.0	55.5	74.0	85.5	92.5	135
RPM	1800	1792	1786	1780	1772	1768	1765	0
Efficiency (%)		82.5	90.2	91.7	92.4	91.7	91.0	
P.F. (%)	8.5	47.5	88.0	77.5	81.6	83.0	84.0	37.0

Motor Speed Data

	LR	Pull-Up	BD	Rated	Idle
Speed (RPM)	0	900	1665	1772	1800
Current (Amps)	182	165	110	31.5	13.0
Torque (ft-lb)	135	120	205	74.0	0.00

Information Block

HP	25.0
Sync. RPM	1800
Frame	284
Enclosure	TEAO
Construction	TTN
Voltage	230/460 V
Frequency	60 Hz
Design	B
LR Code letter	G
Service Factor	1.15
Temp Rise @ FL	0 °C
Duty	CONT
Ambient	40 °C
Elevation	1,000 feet
Rotor/Shaft wk ²	4.2 lb-Ft ²
Ref Wdg	K2844124 R5
Sound Pressure @ 1M	999 dBA
VFD Rating	VARIABLE 10:1
Outline Dwg	B-SS312689-1425
Conn. Diag	A-EE7308-LE
Additional Specifications:	
0	
EQUIV CKT (OHMS / PHASE)	
R1	R2
0.1710	0.1430
X1	X2
0.8540	1.0510
Xm	20.1100



Speed - Torque Curve

